



# GAT MONTHLY MEMBERSHIP PROGRESS REPORT

Results as of: 4/30/2023

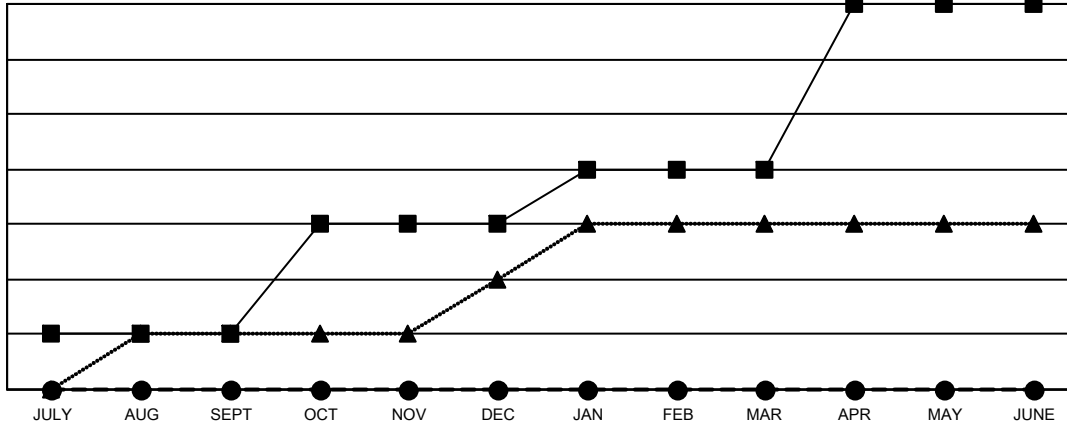
Multiple District 12

LOCATION: TENNESSEE

Clubs			
RESULTS FOR 2022-2023			
QUARTER	NEW CLUB GOAL	NEW CLUBS	DROPPED CLUBS
JULY/AUG/SEPT	1	0	0
OCT/NOV/DEC	2	0	2
JAN/FEB/MAR	1	0	3
APR/MAY/JUNE	3	0	1

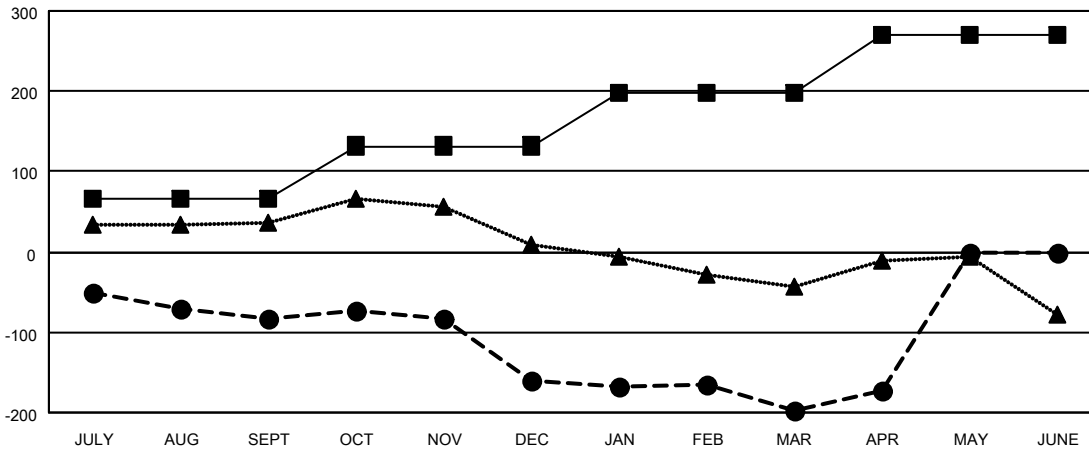
Members			
RESULTS FOR 2022-2023			
QUARTER	MEMBER GROWTH NET GOAL	MEMBER GROWTH ACTUAL	DROPPED MEMBERS ACTUAL (including transfers)
JULY/AUG/SEPT	66	75	152
OCT/NOV/DEC	66	115	176
JAN/FEB/MAR	67	106	132
APR/MAY/JUNE	71	53	24

GOALS AND ACTUAL NEW CLUBS CUMULATIVE



- CURRENT YEAR GOALS FOR NEW CLUBS
- CURRENT YEAR ACTUAL NEW CLUBS
- ▲- LAST YEAR ACTUAL NEW CLUBS

GOALS AND ACTUAL MEMBERS CUMULATIVE



- MEMBER GROWTH NET GOAL
- MEMBER GROWTH ACTUAL
- ▲- LAST YEAR MEMBERSHIP ACTUAL

DROPPED CLUBS: 6	
<b>DROPPED MEMBERS</b>	
DECEASED	66
CLUB CANCELLED	9
OTHER	409
<b>TOTAL</b>	<b>484</b>

92 CLUBS OF 195 ADDED 1 OR MORE NEW MEMBERS

[CLICK HERE FOR CUMULATIVE MEMBERSHIP DATA](#)

GENDER DISTRIBUTION	
MALE	2,411 (60.03%)
FEMALE	1,604 (39.94%)
NON BINARY	1 (0.02%)
PREFER NOT TO ANSWER	0 (0.00%)
<b>TOTAL FAMILY UNIT MEMBERS</b>	<b>879</b>
<b>FAMILY MEMBERS PAYING HALF DUES</b>	<b>449</b>